

FINAL  PHASE

**ONE, TWO  
& THREE  
BEDROOM  
APARTMENTS**

**NORTHOLT**

**EXPLORE  
DISCOVER  
CONNECT**



Because good homes make everything possible



## *The finer details*

Everything about your new home at Rectory Park shows we have created a special space for you to enjoy living in.



# Specification

Your new home has been designed to make the most of natural light and is equipped for modern living.

## KITCHEN

---

Fitted kitchens by Symphony New York range.

Gloss white fitted units with gloss pearl grey doors to the larder and/or fridge/freezer (ground to second floor)

Gloss pearl grey fitted units with gloss dusk grey doors to the larder and/or fridge/freezer (third to fourth floor)

Larder unit & Indesit integrated fridge/freezer

Indesit integrated oven, hood and hob with stainless steel splashback

Indesit integrated dishwasher

Indesit washer / dryer

LED Chrome downlighters

## GENERAL

---

Grey carpet to bedrooms

Laminate flooring Reclaimed Chestnut Natural

Fitted wardrobe to master bedrooms with sliding opaque glass doors

Smoke alarms and Carbon monoxide dectectors

LED Chrome downlighters

We are unable to accommodate any individual changes, additions or amendments to the specification, layout or plans to any individual houses. Your attention is drawn to the fact that it may not be possible to obtain the products as referred to in the specification. In such cases similar alternatives will be provided. Network Homes reserve the right to make these changes as required. June 2019.



## Specification

Each apartment has it's own balcony or terrace, with some beautiful views of Rectory Park and the surrounding areas.

### OUTSIDE AREA

Garden, balcony or terrace to all apartments

Entry phone system and CCTV

Secure cycle storage

### BATHROOM

Contemporary sanitary ware in white finished with matching floor and wall tiles. Bathrooms are tiled with Madagascar Blanco tiles

Mirrored wall cabinet with integral shaver socket and LED feature lighting

Chrome heated towel rail

Shower and glass screen over bath

Waterproof brushed chrome downlighters

### WINDOWS & DOORS

UPVC Grey windows and external doors

### HOME ENTERTAINMENT & COMMUNICATION

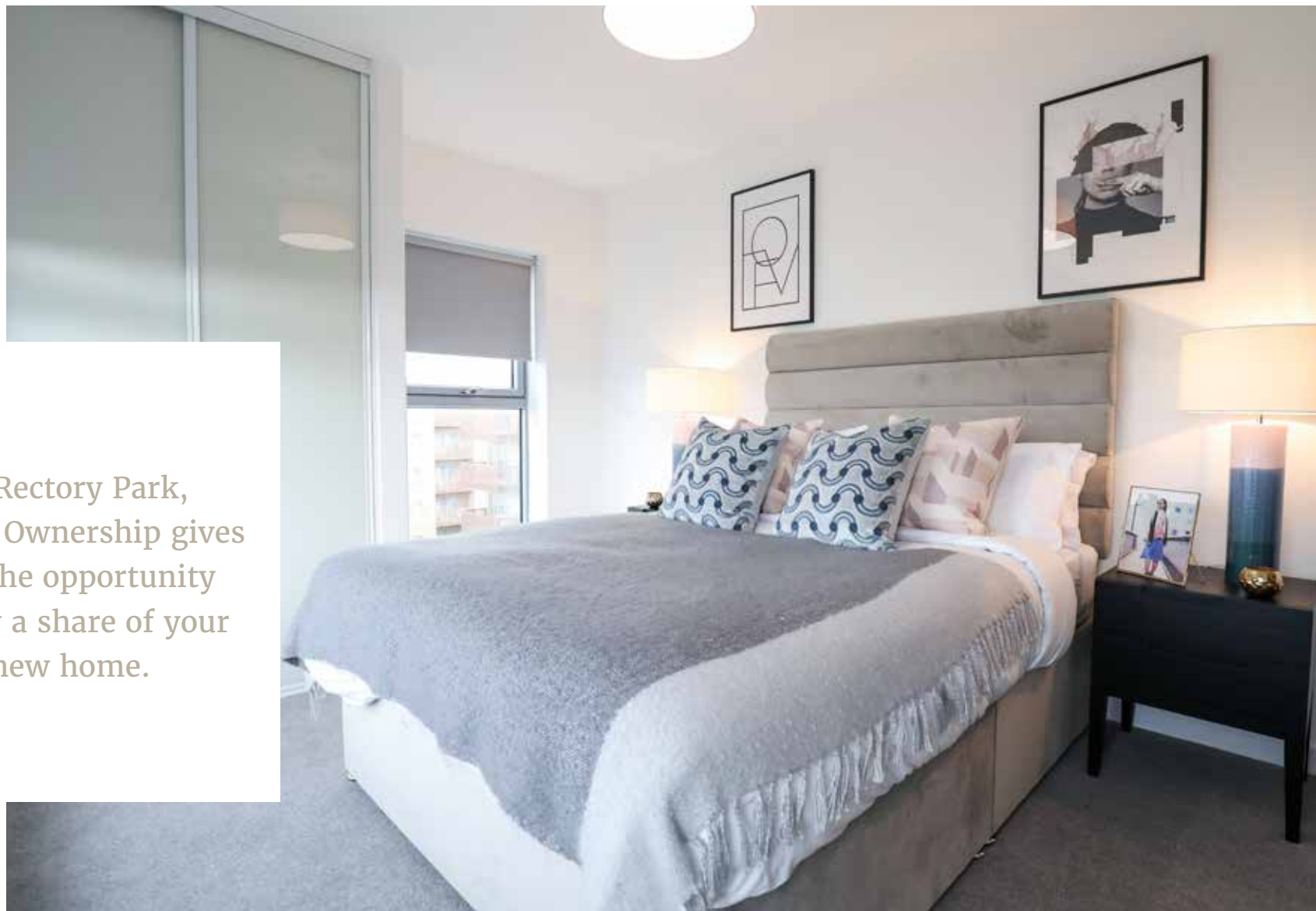
Combination sockets for TV in living room and master bedroom

Sky Q available





At Rectory Park,  
Shared Ownership gives  
you the opportunity  
to buy a share of your  
new home.



# SHARED OWNERSHIP

AT RECTORY PARK

*Homes for  
local people*

These beautiful homes at Rectory Park are available to purchase on a Shared Ownership basis, offering a perfect opportunity for local people to get a step on the property ladder. Shared Ownership helps those who want to buy a home of their own, but who can't afford the cost of buying outright.

At Rectory Park, you can buy a share of your new home. The rest is owned by Network Homes and you pay a subsidised rent on this portion in addition to your own mortgage. You will also need to have savings to cover any deposit required by your mortgage lender and the costs involved in moving.

There will also be a service charge payable to cover the cost of the communal maintenance and this includes the buildings insurance. Shared Ownership is subject to availability and qualifying criteria. Priority will be given to people living or working in the London Borough of Ealing. Every application is assessed individually.

Following the initial purchase, you have the option of increasing your share when you can afford to do so. This is called 'staircasing' which means you could eventually own all of the property. The benefit is the more you own, the less rent you pay.



### RECTORY PARK SITE MAP



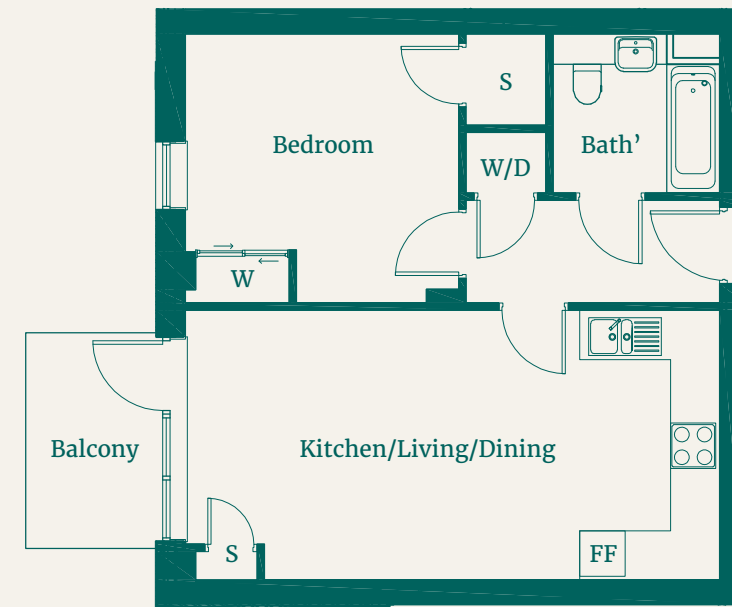
■ Shared Ownership Homes    
 ■ New Homes Coming Soon    
 ■ Phase 1 Completed

Development layout not to scale.

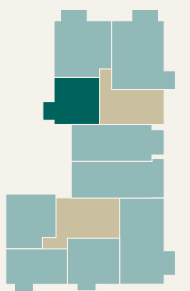


### ONE BEDROOM APARTMENT Apartments 33 • 37 • 41 • 44

- Bath' - Bathroom
- FF - Fridge Freezer
- S - Store
- W - Wardrobe
- W/D - Washer/Dryer



DIMENSIONS	METRES	FEET
Kitchen/Living/Dining	3.6 x 7.1	11'9" x 23'3"
Bedroom	3.6 x 3.6	11'9" x 11'9"
Bathroom	2.1 x 2.2	6'10" x 7'2"
<b>TOTAL</b>	<b>51m<sup>2</sup></b>	<b>549ft<sup>2</sup></b>

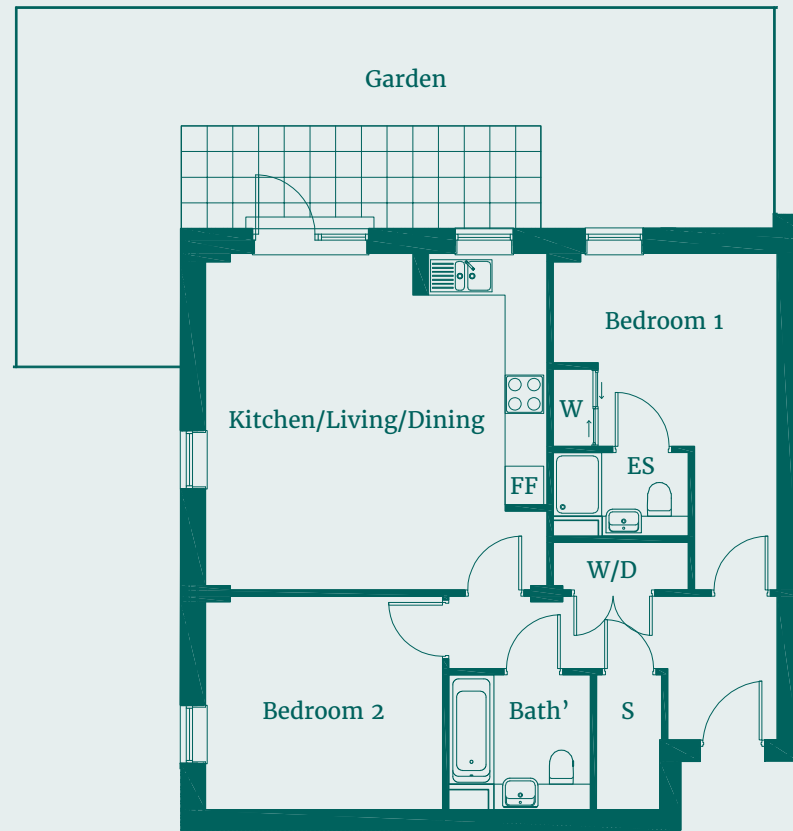


Point from which maximum dimensions are measured. Dimensions are intended for guidance only and may not form part of any contract, the developer reserves the right to vary as necessary to complete works. All measurements and areas may vary by approximately 5%. We operate a policy of continuous product development and features may, therefore, vary from time to time. This information does not constitute a contract, part of a contract or warranty. They are not intended to be used for carpet sizes, appliance sizes or items of furniture. All details correct as above at time of going to press June 2019.

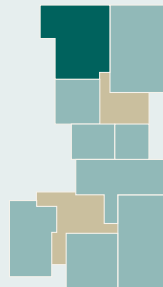


**TWO BEDROOM APARTMENT**  
Apartment 30

- Bath' - Bathroom
- ES - Ensuite
- FF - Fridge Freezer
- S - Store
- W - Wardrobe
- W/D - Washer/Dryer



DIMENSIONS	METRES	FEET
Kitchen/Living/Dining	5.3 x 5.3	17'4" x 17'4"
Bedroom 1	3.0 x 3.5	9'10" x 11'5"
Bedroom 2	3.4 x 3.7	11'1" x 12'1"
Bathroom	2.1 x 2.2	6'10" x 7'2"
<b>TOTAL</b>	<b>75m<sup>2</sup></b>	<b>807ft<sup>2</sup></b>

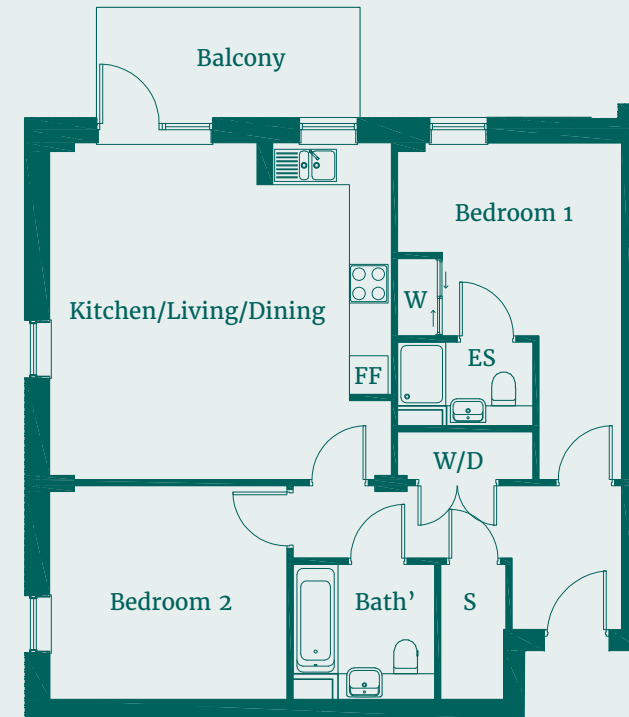


Point from which maximum dimensions are measured. Dimensions are intended for guidance only and may not form part of any contract, the developer reserves the right to vary as necessary to complete works. All measurements and areas may vary by approximately 5%. We operate a policy of continuous product development and features may, therefore, vary from time to time. This information does not constitute a contract, part of a contract or warranty. They are not intended to be used for carpet sizes, appliance sizes or items of furniture. All details correct as above at time of going to press June 2019.

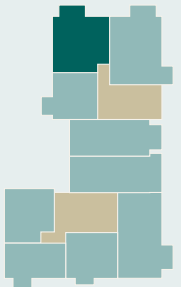


**TWO BEDROOM APARTMENT**  
Apartments 32 • 36 • 40

- Bath' - Bathroom
- ES - Ensuite
- FF - Fridge Freezer
- S - Store
- W - Wardrobe
- W/D - Washer/Dryer



DIMENSIONS	METRES	FEET
Kitchen/Living/Dining	5.3 x 5.3	17'4" x 17'4"
Bedroom 1	3.0 x 5.2	11'5" x 17'0"
Bedroom 2	3.4 x 3.7	11'1" x 12'1"
Bathroom	2.1 x 2.2	6'10" x 7'2"
<b>TOTAL</b>	<b>75m<sup>2</sup></b>	<b>807ft<sup>2</sup></b>

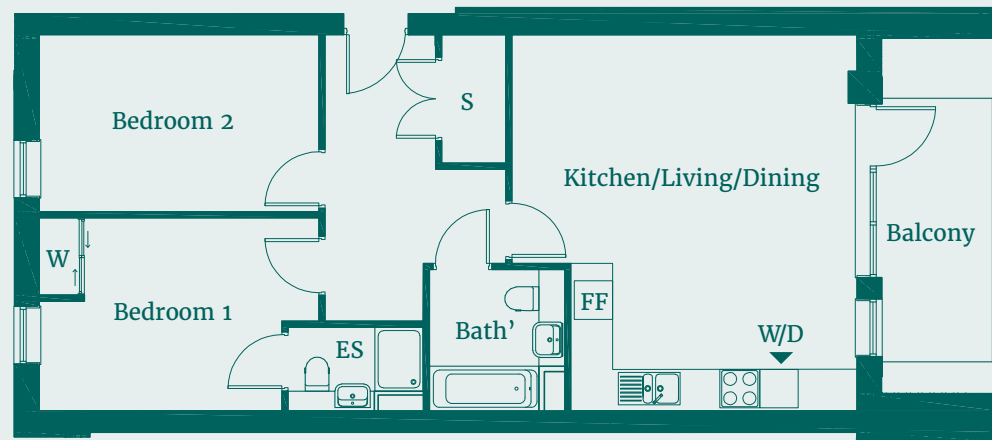


Point from which maximum dimensions are measured. Dimensions are intended for guidance only and may not form part of any contract, the developer reserves the right to vary as necessary to complete works. All measurements and areas may vary by approximately 5%. We operate a policy of continuous product development and features may, therefore, vary from time to time. This information does not constitute a contract, part of a contract or warranty. They are not intended to be used for carpet sizes, appliance sizes or items of furniture. All details correct as above at time of going to press June 2019.



**TWO BEDROOM APARTMENT**  
Apartments 34 • 38 • 42 • 45

- Bath' - Bathroom
- ES - Ensuite
- FF - Fridge Freezer
- S - Store
- W - Wardrobe
- W/D - Washer/Dryer



DIMENSIONS	METRES	FEET
Kitchen/Living/Dining	5.4 x 5.9	17'8" x 19'4"
Bedroom 1	3.0 x 4.3	9'10" x 14'1"
Bedroom 2	2.8 x 4.3	9'2" x 14'1"
Bathroom	2.1 x 2.2	6'10" x 7'2"
<b>TOTAL</b>	<b>74m<sup>2</sup></b>	<b>796ft<sup>2</sup></b>

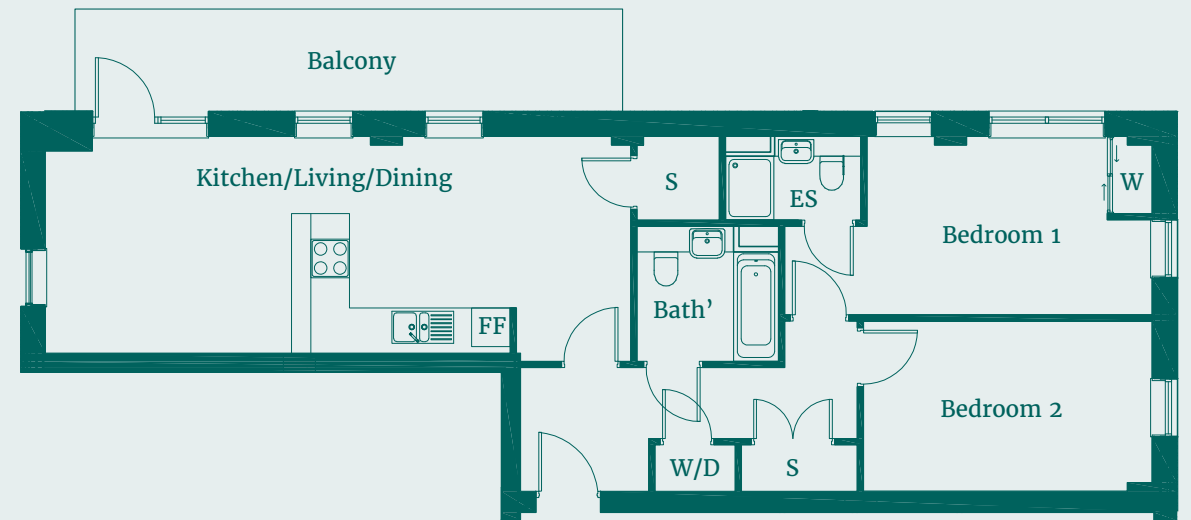


Point from which maximum dimensions are measured. Dimensions are intended for guidance only and may not form part of any contract, the developer reserves the right to vary as necessary to complete works. All measurements and areas may vary by approximately 5%. We operate a policy of continuous product development and features may, therefore, vary from time to time. This information does not constitute a contract, part of a contract or warranty. They are not intended to be used for carpet sizes, appliance sizes or items of furniture. All details correct as above at time of going to press June 2019.

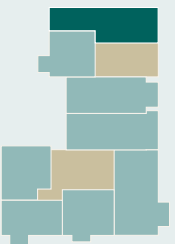


**TWO BEDROOM APARTMENT**  
Apartment 43

- Bath' - Bathroom
- ES - Ensuite
- FF - Fridge Freezer
- S - Store
- W - Wardrobe
- W/D - Washer/Dryer



DIMENSIONS	METRES	FEET
Kitchen/Living/Dining	3.4 x 9.1	11'1" x 29'10"
Bedroom 1	2.8 x 3.7	9'2" x 12'1"
Bedroom 2	2.7 x 4.5	8'10" x 14'9"
Bathroom	2.1 x 2.2	6'10" x 7'2"
<b>TOTAL</b>	<b>79m<sup>2</sup></b>	<b>850ft<sup>2</sup></b>



Point from which maximum dimensions are measured. Dimensions are intended for guidance only and may not form part of any contract, the developer reserves the right to vary as necessary to complete works. All measurements and areas may vary by approximately 5%. We operate a policy of continuous product development and features may, therefore, vary from time to time. This information does not constitute a contract, part of a contract or warranty. They are not intended to be used for carpet sizes, appliance sizes or items of furniture. All details correct as above at time of going to press June 2019.





**THREE BEDROOM APARTMENT**  
Apartment 29

- Bath' - Bathroom
- ES - Ensuite
- FF - Fridge Freezer
- S - Store
- W - Wardrobe
- W/D - Washer/Dryer



DIMENSIONS	METRES	FEET
Kitchen/Living/Dining	4.1 x 8.0	13'5" x 26'3"
Bedroom 1	2.0 x 4.5	6'6" x 14'9"
Bedroom 2	2.7 x 4.5	8'10" x 14'9"
Bedroom 3	2.1 x 4.5	6'10" x 14'9"
Bathroom	2.1 x 2.2	6'10" x 7'2"
<b>TOTAL</b>	<b>87m<sup>2</sup></b>	<b>936ft<sup>2</sup></b>

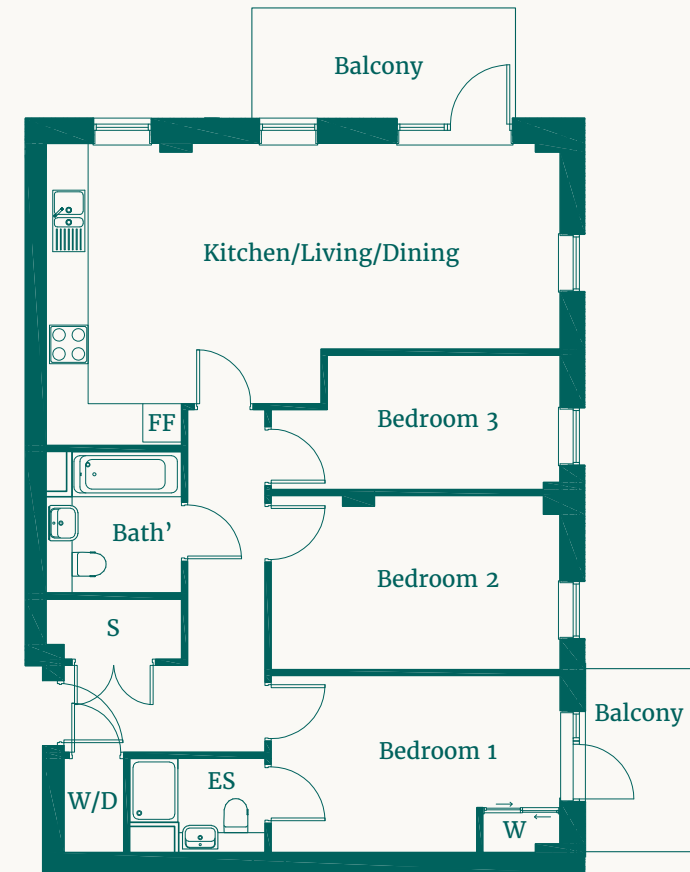


Point from which maximum dimensions are measured. Dimensions are intended for guidance only and may not form part of any contract, the developer reserves the right to vary as necessary to complete works. All measurements and areas may vary by approximately 5%. We operate a policy of continuous product development and features may, therefore, vary from time to time. This information does not constitute a contract, part of a contract or warranty. They are not intended to be used for carpet sizes, appliance sizes or items of furniture. All details correct as above at time of going to press June 2019.

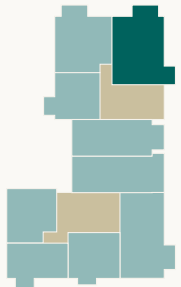


**THREE BEDROOM APARTMENT**  
Apartments 31 • 35 • 39

- Bath' - Bathroom
- ES - Ensuite
- FF - Fridge Freezer
- S - Store
- W - Wardrobe
- W/D - Washer/Dryer



DIMENSIONS	METRES	FEET
Kitchen/Living/Dining	4.1 x 8.0	13'5" x 26'3"
Bedroom 1	2.7 x 4.5	8'10" x 14'9"
Bedroom 2	2.7 x 4.5	8'10" x 14'9"
Bedroom 3	2.1 x 4.5	6'10" x 14'9"
Bathroom	2.1 x 2.2	6'10" x 7'2"
<b>TOTAL</b>	<b>87m<sup>2</sup></b>	<b>936ft<sup>2</sup></b>



Point from which maximum dimensions are measured. Dimensions are intended for guidance only and may not form part of any contract, the developer reserves the right to vary as necessary to complete works. All measurements and areas may vary by approximately 5%. We operate a policy of continuous product development and features may, therefore, vary from time to time. This information does not constitute a contract, part of a contract or warranty. They are not intended to be used for carpet sizes, appliance sizes or items of furniture. All details correct as above at time of going to press June 2019.

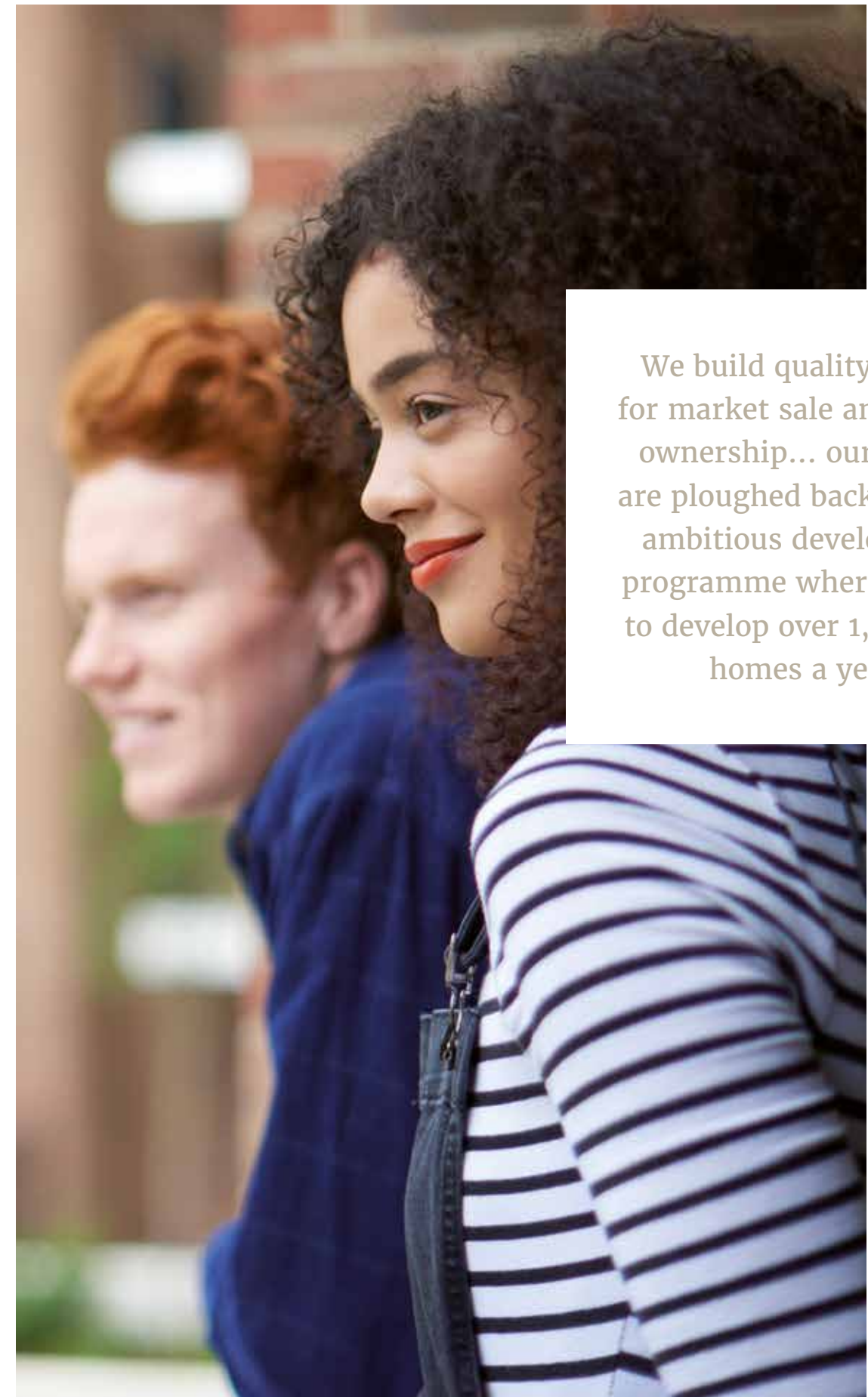
# ABOUT NETWORK HOMES

## LIFESTYLE

*One of the leading housing associations in the country*

Award winning Network Homes is one of the leading housing association developers in the country. We love to build and we take great pride in the quality of the homes we deliver. We are one of the leading providers of quality homes in London and the Home Counties with a portfolio of over 20,000 properties.

We build prestigious homes for market sale and shared ownership (part rent, part buy). Network Homes exists to build and manage homes. We operate commercially but our profits are ploughed back into our ambitious development programme where we aim to develop over 1,000 new homes a year. We take pride in providing an impressive specification which, coupled with sustainable design features, means our homes are ideal for modern living. We've been dedicated to doing this for over 40 years, since we were formed in 1974. Without a good home it is difficult for anyone to feel comfortable, happy or secure in their life. We believe everyone needs a good home, because good homes make everything possible.



We build quality homes for market sale and shared ownership... our profits are ploughed back into our ambitious development programme where we aim to develop over 1,000 new homes a year.



Because good homes make everything possible

[NETWORKHOMESSALES.CO.UK](http://NETWORKHOMESSALES.CO.UK)